

Public Meeting

January 19, 2024



T E X A S
EARLY LEARNING
C O U N C I L

Welcome!

Thank you for joining this meeting. We will begin shortly.

Members of the public are still able request to provide oral public comment today by emailing their request to megan.schneider@tea.texas.gov. Please include your name (as it appears in Zoom), email, organization you are representing, and agenda topic being addressed.

Agenda

1. Call to Order
2. October 2023 Minutes Approval
3. Public Comment
4. Preschool Development Grant Birth through Five
5. 2024 Meeting Dates
6. Updates from TELC Members
7. Upcoming Early Childhood Events
8. Adjourn

Public Comment

Earlylearningtexas.org has a section called Meetings. This houses all the meeting information for past and upcoming meetings as well as the agenda once it's released. Public agendas are posted a minimum of one week prior to the meeting date, along with instructions for submitting public comment.

- Please provide your name, organization, and the agenda topic you are commenting on for the record.
- Each speaker will be allotted three minutes to provide your public comment. When you hear a chime sound at the two-minute mark, this indicates that you will have one minute remaining to wrap up comments.
- Council members may ask questions after each speaker concludes.



T E X A S
EARLY LEARNING
C O U N C I L

Texas Early Learning Strategic Plan

2024 – 2026



Texas Early Learning Council

Cecilia Abbott, First Lady of Texas

Katherine Abba, Ph.D., Child Development Program,
Houston Community College

Sarah Abrahams, Texas Department of Family and
Protective Services

Weldon Beard, Texas Head Start Association

Terrie Breeden, Texas Education Agency

April Crawford, Ph.D., Children's Learning Institute,
UT Health Science Center at Houston

Rachelle Daniel, Child Care Regulation, Texas Health
and Human Services

Alferma Giles, Ph.D., Texas Head Start State
Collaboration Office at the Children's Learning
Institute, UT Health Science Center at Houston

Melissa Hoisington, Primrose Schools, formerly Texas
Licensed Child Care Association

Becky Huss-Keeler, Ph.D., University of Houston-
Clear Lake

Kim Kofron, Children at Risk

Tori Lee, Texas Education Agency

Beatris Mata, Ector County Independent School
District

Reagan Miller, Texas Workforce Commission, Chair

Marisela Nava, Texas Southmost College

Stephanie Rubin, Texans Care for Children, Vice Chair

Amber Scanlan, PNC

Kierstan Schwab, Texas Public Broadcasting
Association

Jennifer Stockemer, Ivy Vine Preschool

June Yeatman, Austin Community College Children's
Lab School

Meghan Young, Early Childhood Intervention, Texas
Health and Human Services Commission

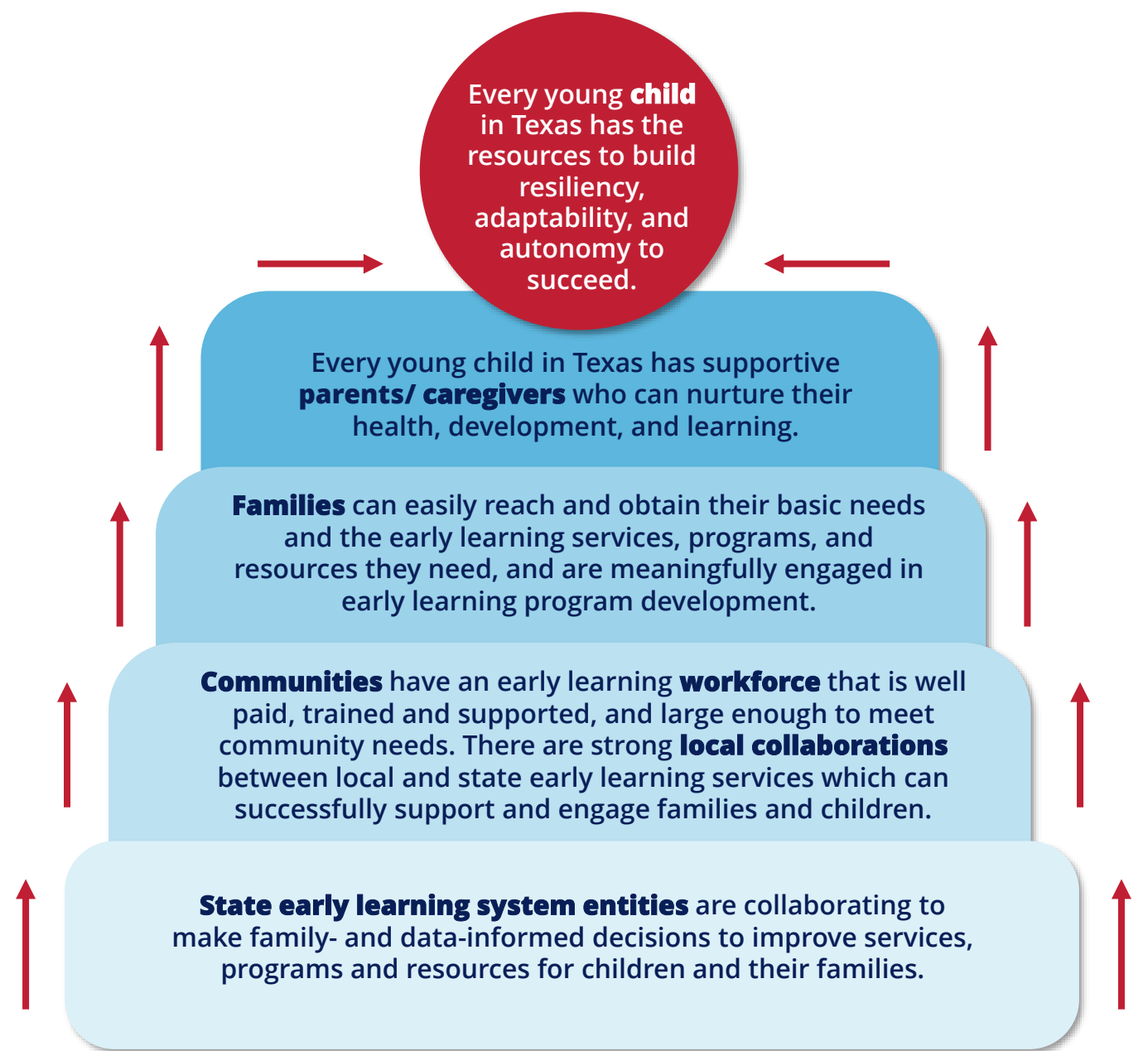
The Texas Early Learning System

Early Learning State and System Entities	Texas Department of Family and Protective Services (DFPS)	Texas Health and Human Services Commission (HHSC)	Texas Department of State Health Services (DSHS)	Texas Head Start State Collaboration Office (THSSCO)	Texas Education Agency (TEA)	Texas Workforce Commission (TWC)	Early Childhood Interagency Workgroup (ECIW)	Texas Early Learning Council (TELC)
Early Learning Services and Programs	Child Protective Services Family Education and Support Services Texas Home Visiting	Child Care Regulation Early Childhood Intervention	Maternal and Child Public Health Initiatives	Early Head Start Head Start	Early Childhood Special Education Public Pre-kindergarten	Child Care Services Texas Rising Star		

Process Overview

- Three strategic planning sessions with the Texas Early Learning Council
- Active engagement of family and early learning workforce stakeholders
- Coordination and consideration of the concurrent statewide early childhood needs assessment findings
- A content scan of current early learning state entity strategic plans and documents.

Our Vision: All young Texans have a strong foundation for success



2024-2026 Texas Early Learning Strategic Plan Goals

Family Access, Navigation & Engagement	Goal 1	Families can easily meet their basic needs and access the early learning services, programs, and resources they need, and are meaningfully engaged to provide feedback on services.
Workforce Recruitment, Retention & Support	Goal 2	The early learning workforce is well-paid, trained and supported; can reach and obtain the professional development resources they need throughout their careers; and is large enough to meet Texans' needs.
Local Systems & Partnership Building	Goal 3	Local early learning systems are well-coordinated, appropriately resourced, and successfully support the children and families in their communities.
Integrated Data & System	Goal 4	State early learning system entities are collaborating to make family- and data-informed decisions to improve services, programs and resources for children and their families.

Family Navigation, Access & Engagement Strategies

Strategy 1.1: Streamline intake and administrative systems for parents and providers to make it easier for families to navigate early learning programs and services.

Strategy 1.2: Increase availability and supply of early learning programs and services.

Strategy 1.3: Increase access to early learning programs and services.

Strategy 1.4: Increase family feedback to improve the quality and accessibility of early learning services.

Workforce Recruitment, Retention & Support Strategies

Strategy 2.1: Increase financial support of the early learning workforce.

Strategy 2.2: Expand and refine early learning pathways to comprehensively include all professionals who work with young children.

Strategy 2.3: Expand the number of people entering the early learning workforce.

Strategy 2.4: Retain early learning workforce professionals in the field by providing educational and social support.

Local Systems & Partnership Strategies

Strategy 3.1: Provide educational and informational support to local partnerships to help communities make informed decisions.

Data & System Coordination Strategies

Strategy 4.1: Develop an ECIDS to strengthen data sharing across agencies and better inform state-level policy and program improvement.

Strategy 4.2: Support data utilization by communities and stakeholders using data platforms to inform quality improvement actions and local systems planning.

Strategy 4.3: Increase alignment and coordination across agencies to improve family access, navigation, and engagement.

Next Steps

- The full strategic plan will be posted on the Texas Early Learning Council website soon: <https://earlylearningtexas.org/>
- Quarterly progress reports will be shared during Texas Early Learning Council meetings
- Tune in to a PDG B-5 Quarterly Webinar for more details on the Needs Assessment and Strategic Plan
 - When: March 6, 2024, 2:00 PM CT
 - Register in advance for this webinar: https://zoom.us/webinar/register/WN_5TXiSH7EQHy02BrT-BAkCw

2024 Meeting Dates

Proposed meeting dates:

April 5, 11am to 1pm

August 2, 11am to 1pm

October 18, 11am to 1pm

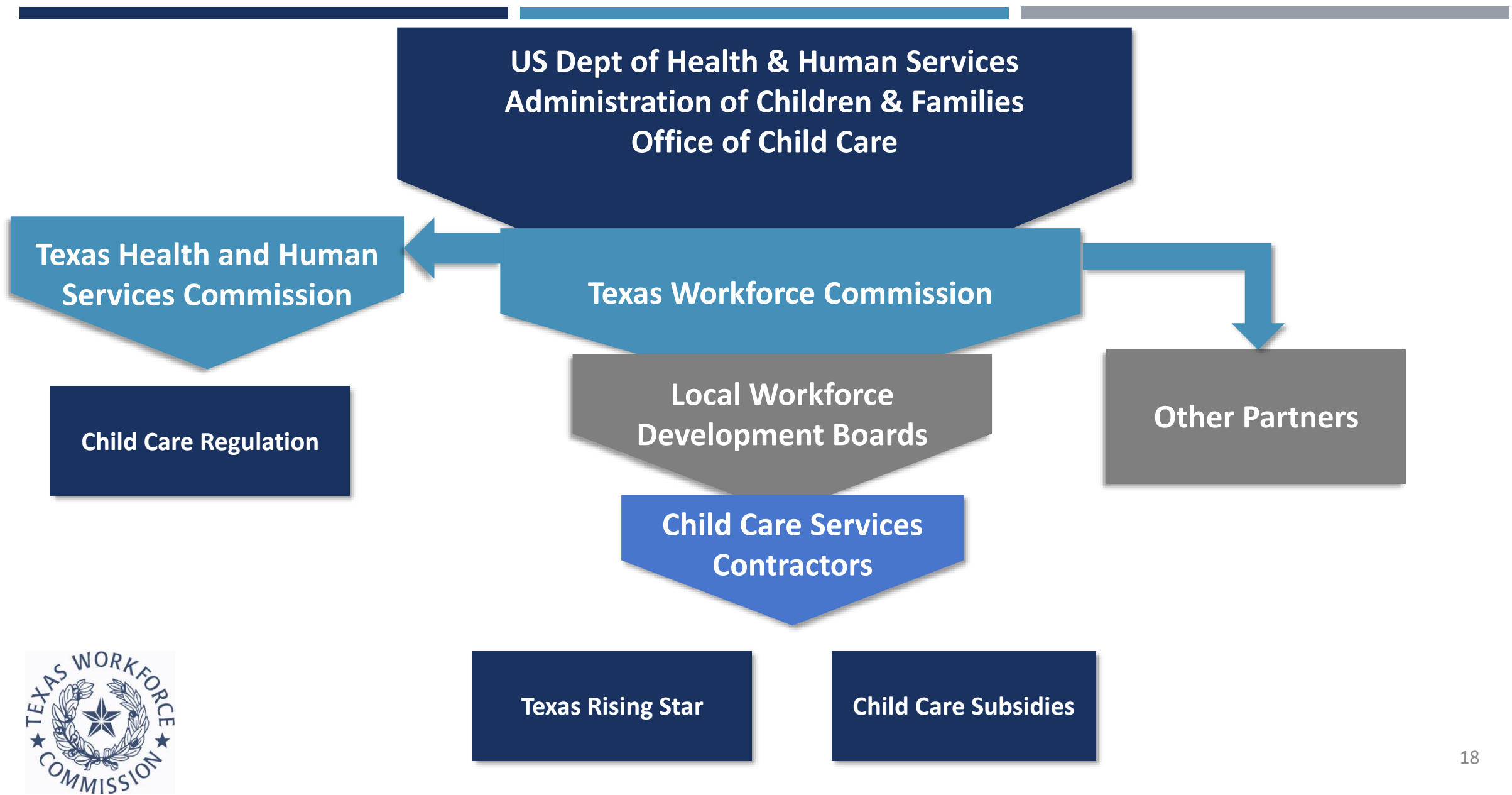


Updates from TELC Members



2025-2027 STATE PLAN

CHILD CARE AND EARLY LEARNING DIVISION





WHAT IS THE CCDF STATE PLAN?

The CCDF State plan informs the Office of Child Care what the state of Texas is currently doing and what is planned for the next three years (2025-2027).

It will describe the policies, strategies, system enhancements, and vision for the child care program, including the subsidy program and Texas Rising Star.

8 Sections of the State Plan:

- Leadership & Coordination
- Family Engagement & Consumer Education
- Financial Assistance for Child Care
- Equal Access to Child Care for Low-income Children
- Minimum Standards for Health and Safety of Child Care Settings
- Qualified & Effective Child Care Workforce
- Continuous Quality Improvement
- Program Integrity & Accountability

STAKEHOLDER SURVEY



Take the survey [here](#) and share with parents, child care providers and other early childhood stakeholders!

STAKEHOLDER INPUT MEETINGS



Location	Date
Abilene	Thursday, February 8, 2024
Round Rock	Tuesday, February 13, 2024
Houston	Wednesday, February 21, 2024
McAllen	Thursday, February 22, 2024
Dallas	Monday, February 26, 2024
Statewide (Virtual)	Wednesday, February 28, 2024

TIMELINE



Activity/Task	Estimated Date
Stakeholder Input Survey	January 15-February 2, 2024
Texas Early Learning Council	January 19, 2024
Stakeholder Input on CCDF State Plan	February 8- February 28, 2024
Commission Action on Draft State Plan	March 5, 2024
Public Hearing for Comment on Draft State Plan	March 11- March 31, 2024
Final State Plan Adopted	June 18, 2024
Final State Plan Submitted to Office of Child Care	June 30, 2024

CONTACT



Cathi Arwood

Child Care & Early Learning Division

Texas Workforce Commission

Stakeholder Input: ccel@twc.texas.gov



Updates from TELC Members



Upcoming Early Childhood Events

Events

Texas Early Childhood Education Summit, May 16 (Virtual)

Adjourn



T E X A S
EARLY LEARNING
C O U N C I L

Thank you for your time! The meeting slides and recording will be posted at:

www.earlylearningtexas.org/

Next meeting:

April 5, 2024 from 11am to 1pm